

JUNE 2015
VOLUME 6

San Diego County Cymbidium Society

Cymbidiums, Paphiopedilums, and Other Outdoor Growing Orchids

Executive Board

President:
Walt Meier

First Vice-President:
Lena Shiroma

Second Vice-
President:
Devon McFerran

Treasurer:
Marjorie Kuhlmann

Membership
Secretary:
Sandi Sandquist

Recording Secretary:
Patti Barna

Directors:
1st Year
Ivan Allen
Debra Funakoshi
Phyllis Prestia
2nd Year
Alex Nadzan
Dennis Wharton

Bill Wong, Past
President

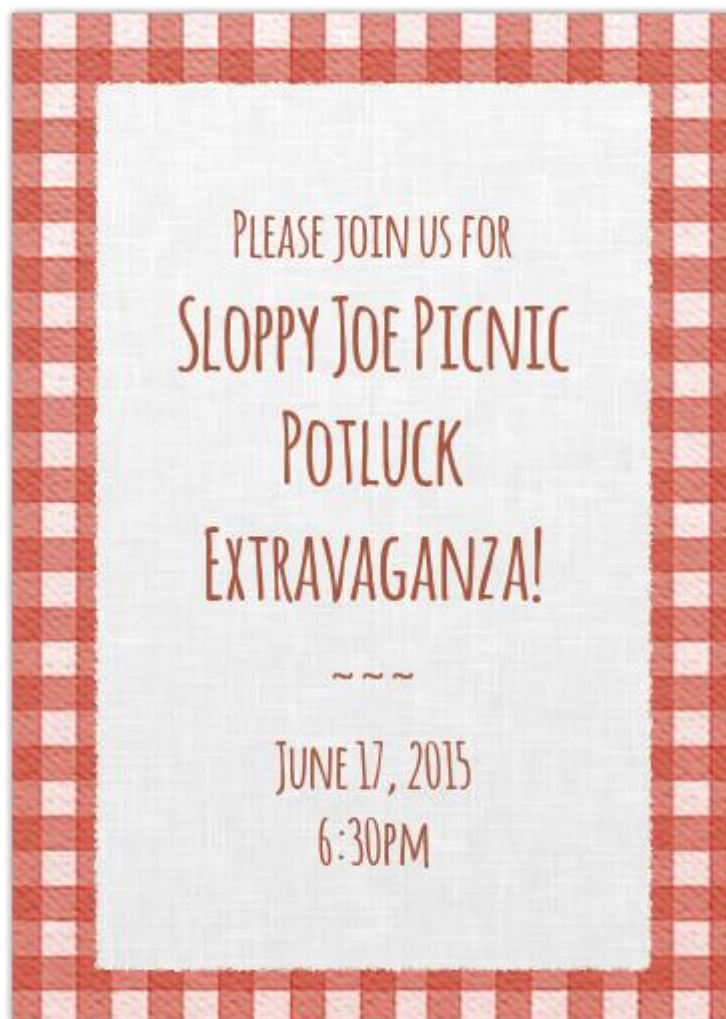
Committee Chairs
Refreshments: Open
Publicity: Open

Newsletter Editor:
Ivan Allen

CSA Representative:
Lena Shiroma

Executive Board
Meetings:
January 10, April 11,
August 8, November
14.
9:00 AM Walt Meier's
home

**We will have no Guest Speaker for the June 17,
2015 Meeting. We are going to have our Annual
Potluck Dinner and Plant Exchange**



PICTURES FROM OUR MAY 20, 2015 MEETING

MEETINGS START AT 6:30PM

Below are pictures taken by Debra Funakoshi

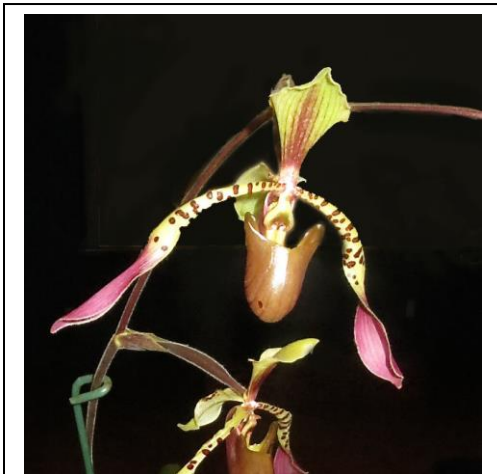


Refreshments:
No Refreshments this month. We are having our Annual Potluck.

Be thinking about our Refreshment Table for the next meeting

REMEMBER — JULY AND AUGUST OUR SOCIETY WILL BE DARK.

ENJOY YOUR SUMMER AND YOUR ORCHIDS!



FROM THE PEN OF LENA SHIROMA THE MAIN EVENT

It's the annual Potluck Extravaganza! This year's theme is the Sloppy Joe Picnic. People have already signed up to bring buns and sloppy joe mix and sandwich toppings. On page 6 is a list to remind people what they volunteered to bring. If you haven't signed up already, it's okay! You can call Lena at 760-504-4851 or just show up with a summer picnic dish. As always, it will be an evening filled with good food and great company.

PLANT EXCHANGE

In the usual tradition, we will be having an orchid exchange instead of the usual raffle table. No pots or supplies, just orchids. Your participation is optional. You do not need to bring a plant to enjoy the potluck. However, the exchange is a fun way to add a new plant to your collection.

Attached to your plant, you should list your name, the name of the plant, and any special growing instructions. Once you arrive, place your plant on the plant exchange table.

The President will start the exchange by pointing to a plant. Whoever owns that plant may make the first selection.

When choosing an orchid to bring, keep in mind nice looking, well-groomed plants will most likely be selected first. Don't be the last to pick!

DOOR PRIZES

Casa de las Orquideas was generous and donated several cymbidiums to our Society. These plants are blooming size but will need to be repotted. Everyone who attends the Potluck Extravaganza will be entered in the FREE Door Prize Drawing. There are 25 cymbidiums so your chances of winning a free orchid is HIGH!

The San Diego County Cymbidium Society now has a face on North County San Diego Meet Up. Go to <https://secure.meetup.com>, click on the "FIND" red button (upper left corner), fill in "Orchid" in the select box (middle, left side – box has a magnifying glass symbol unit) and select the miles (in Vista I use 10 miles. A pea green box (not our choice) will pop up below. Click on the box and you will see us.

Everyone attending the April 15 meeting is encouraged to greet the Meet Up attendees and make them feel at home.

OUR GUEST SPEAKER FOR THE MAY MEETING WAS DEBBY HALLIDAY WHO SPOKE ABOUT ORCHID VIRUS TESTING AND CONTROL. FOLLOWING ARE PICTURES OF THAT TALK, TAKEN BY DEBRA FUNAKOSHI.



DEBBY MADE A GREAT PRESENTATION. IF YOU NOTICE IN THE LOWER RIGHT CORNER, MEMBERS FORMED A SEMI-CIRCLE AROUND THE FRONT OF DEBBY'S PRESENTATION TO SEE AND HEAR WHAT SHE HAD TO SAY. THE PRESENTATION WAS BOTH INTERESTING AND INFORMATIVE.

CALENDAR OF EVENTS

June 17, 2015

San Diego County Cymbidium Society

Third Wednesday of the month.

Culture Class, 6:30PM

General Meeting, 7:00PM

Lake San Marcos Pavilion

331105 La Bonita Drive

San Marcos

Contact is Sandi Sandquist, 760-918-2408

July 7, 2015

San Diego County Orchid Society

First Tuesday of the month.

Novice Class, Rm. 101, 6:30pm

General Meeting, Rm. 101, 7:30pm

Casa Del Prado, Balboa Park

Contact is Genie Hammond 619-426-6831

<http://www.sdorchids.com>

June 19, 2015

San Diego Zoo's Orchid Odyssey

Third Friday of the month

10 AM-2 PM (orchid greenhouse is open)

Contact is Janette Gerrity 619-231-1515 ext.4306

www.events.sandiegozoo.org

July 1, 2015

Palomar Orchid Society

First Wednesday of the month.

Culture Class, 6:30PM

Program. 7:00PM

Lake San Marcos Pavilion

331105 La Bonita Drive

San Marcos

Contact is Sandi Sandquist 760-918-2408

<http://www.palomarorchid.org/>

July 4, 2015

San Diego County Orchid Society Species Group Meeting

First Saturday of the month.

Contact is Paul or Ann Tuskes 858-274-5829

July 12, 2015

Southern California Orchid Species Society

Second Sunday of the month.

General Meeting, 2:00PM

Backs Community Building

201 N. Bradford Avenue,

Placentia

<http://socalorchidspecies.com/>

July 7, 2015

AOS Judging

First Tuesday of the month @ 6pm

Balboa Park, Casa Del Prado,

Room 104, San Diego, CA 92101

Contact is Paul Tuskes 858-274-5829

Do you have photos of your blooming orchids? Please share them with us. Email them to the newsletter editor at aaallen@cox.net. There's no guarantee that all photos will be used, but every effort will be made to include some.

THE DEADLINE FOR ENTRIES IN THE NEWSLETTER IS THE 7TH OF EVERY MONTH. FOR MORE INFO, CONTACT IVAN ALLEN AT: AAALLEN@COX.NET

FOOD FOR THE POTLUCK

THE FOLLOWING PEOPLE HAVE SIGNED UP TO BRING THE FOLLOWING GOOD THINGS.

BUNS: LENA S., JUNE A., DEVON M.

COLESLAW : LENA S.

POTATO SALAD : MARJORIE K.

SLOPPY JOE MEAT : SANDI S.

ONIONS : WALT M., AUDREY W.

CHEESE : CECILY B.

PICKLES : WALT M., AUDREY W.

CHIPS : FRANK V.

APPETIZERS : DEBRA F.

DESSERT : BILL & SHELLY W., AIDA P., IVAN A.

BRING YOUR OWN BEVERAGE. COFFEE AND WATER WILL BE PROVIDED.

THINGS WE STILL NEED :

TOMATOES, SLICED

APPETIZERS

ANYTHING ELSE YOU WANT TO BRING.

PLEASE COORDINATE WITH LENA SHIROMA AT 760-504-4851, OR ORCHIDDIVA@GLOBALINFO.COM

MEMBERSHIP APPLICATION/RENEWAL FORM
January through December 2015

SAN DIEGO COUNTY CYMBIDIUM SOCIETY
A Branch of the Cymbidium Society of America, Inc.

New Member: _____ Renewal : _____ Date: _____

Name (s): _____

Address: _____

City: _____ Zip: _____

Phone: _____

Email: _____

Branch Dues: _____ \$10.00 (per person)

National Dues : _____ \$35.00 (per household)

National Dues includes a subscription to the Cymbidium Society of America Journal. Please pay both Branch dues and National dues to the address below and we will send your National dues on for you.

Name Badge(s): _____ \$12.00 each. Magnetic backing.
Clearly print name(s):

Donation: _____ Purpose of Donation: _____

Total Amount Enclosed: \$ _____

Note: Dues paid represent membership for the calendar year.

Bring dues to the next meeting or mail to:

Sandi Sandquist
6408 Crossbill Ct.
Carlsbad, CA 92011

Make checks payable to SDCCS.

Special Notice

Rudvalis Orchids will generously provide a selected free plant to new members and the member that brought that new member to the society.

Thank you,
Barbara
Rudvalis!

If you didn't get your voucher for a free plant, please ask!

SAN DIEGO COUNTY CYMBIDIUM SOCIETY

c/o Ivan Allen
1493 Monte Mar Rd.
Vista, CA 92084



ABOUT OUR ORGANIZATION...

The purpose of the Society is to share information and educate one another in the culture of Cymbidiums, Paphiopedilums and other outdoor growing orchid genera through display, lectures and discussions by knowledgeable orchidologists.

The San Diego County Cymbidium Society meets on the third (3rd) Wednesday of the month, except in July, August and December

We meet at the Lake San Marcos Pavilion, 1105 La Bonita Dr., San Marcos, CA 92078.

You are invited to join the San Diego County Cymbidium Society. Benefits include a monthly newsletter, monthly presentations by knowledgeable orchid specialists, trips to area orchid nurseries, and many opportunities for adding beautiful and uncommon orchids to your collection.

To join, send your check for \$10.00 per person for a branch membership and \$35.00 per household for a national CSA membership (which includes the CSA Journal) to Sandi Sandquist.